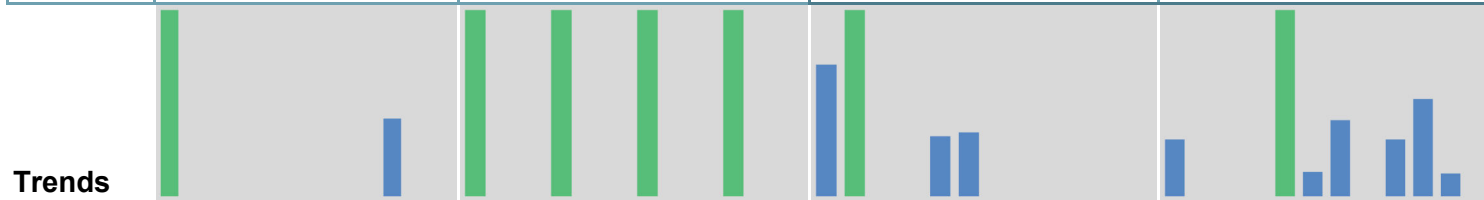
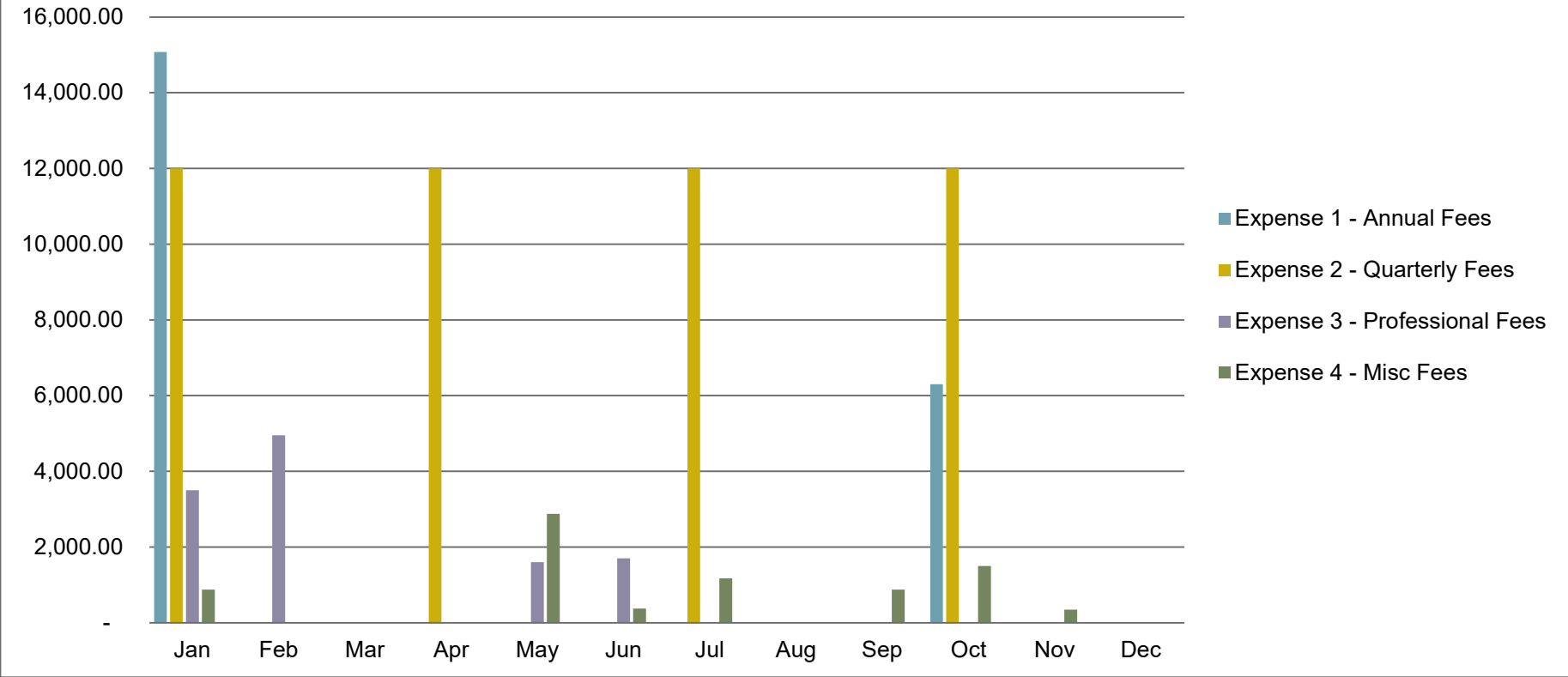


# Firefighter Pension Expenses FY24

Month	Expense 1 - Annual Fees	Expense 2 - Quarterly Fees	Expense 3 - Professional Fees	Expense 4 - Misc Fees	
Jan	15,075.00	12,000.00	3,500.00	875.00	31,450.00
Feb	-	-	4,950.00	-	<b>4,950.00</b>
Mar	-	-	-	-	-
Apr	-	12,000.00	-	-	12,000.00
May	-	-	1,600.00	2,875.00	4,475.00
Jun	-	-	1,700.00	375.00	2,075.00
Jul	-	12,000.00	-	1,175.00	13,175.00
Aug	-	-	-	-	-
Sep	-	-	-	875.00	875.00
Oct	6,300.00	12,000.00	-	1,500.00	19,800.00
Nov	-	-	-	350.00	350.00
Dec	-	-	-	-	-
<b>Total</b>	<b>21,375.00</b>	<b>48,000.00</b>	<b>11,750.00</b>	<b>8,025.00</b>	<b>89,150.00</b>



## Expense Trends by Month



All adjustable fees are based on the following schedule  
 It's 20 bp per year on first \$5,999,999 of assets;  
 15 bp per year on asset portion \$6 million to \$14,999,999;  
 10 bp per year on asset portion \$15 million to \$24,999,999;  
 5 bp per year on asset portion from \$25 million to \$49,999,999